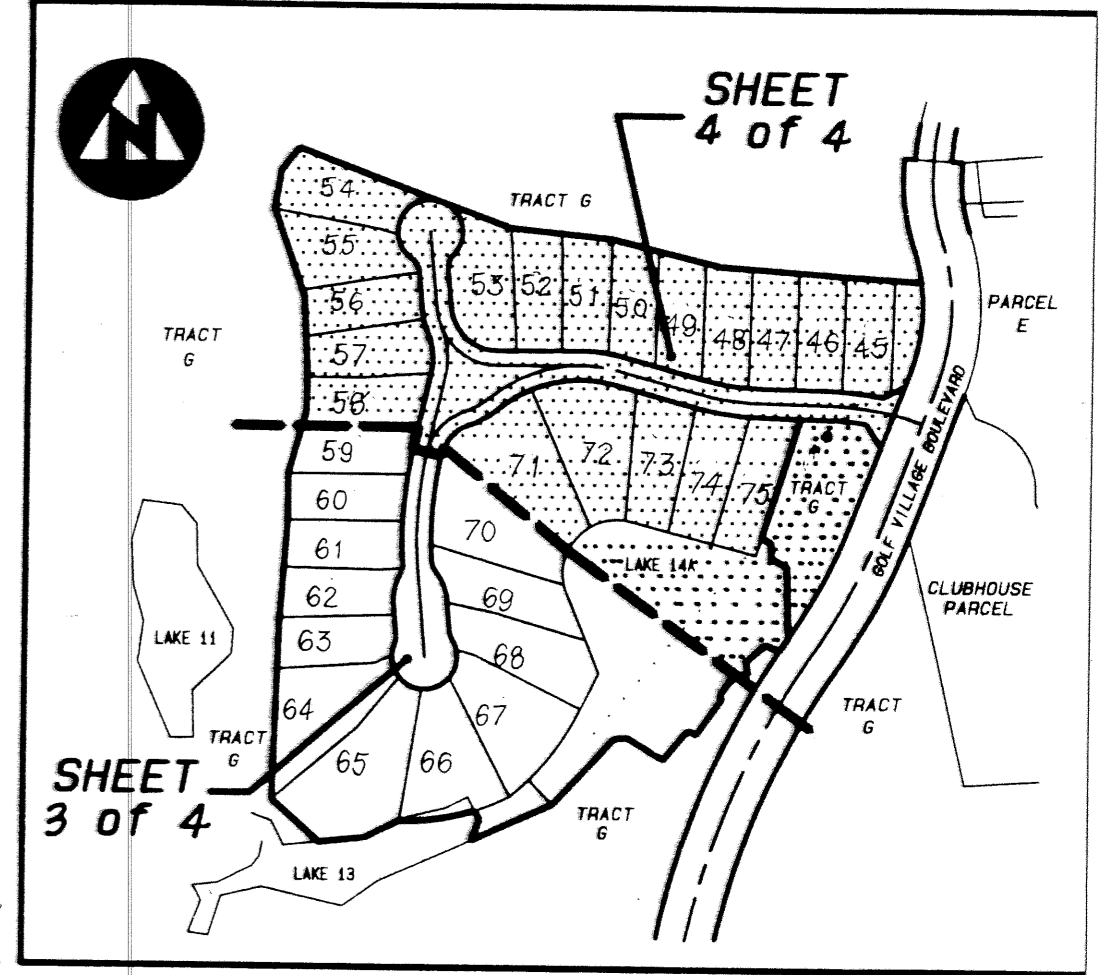
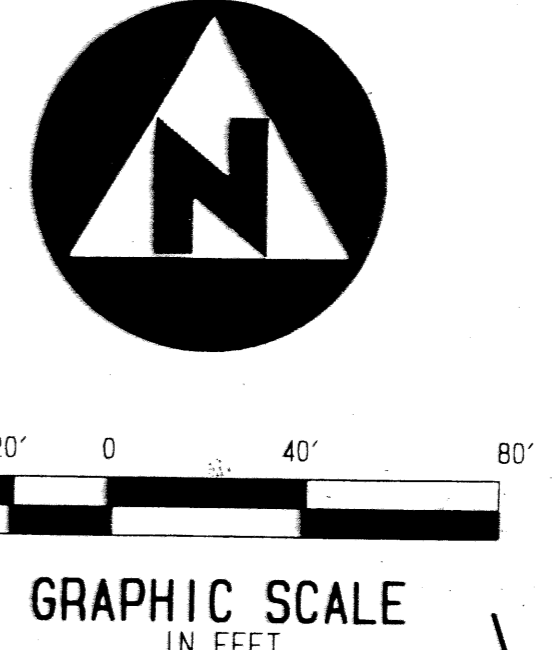
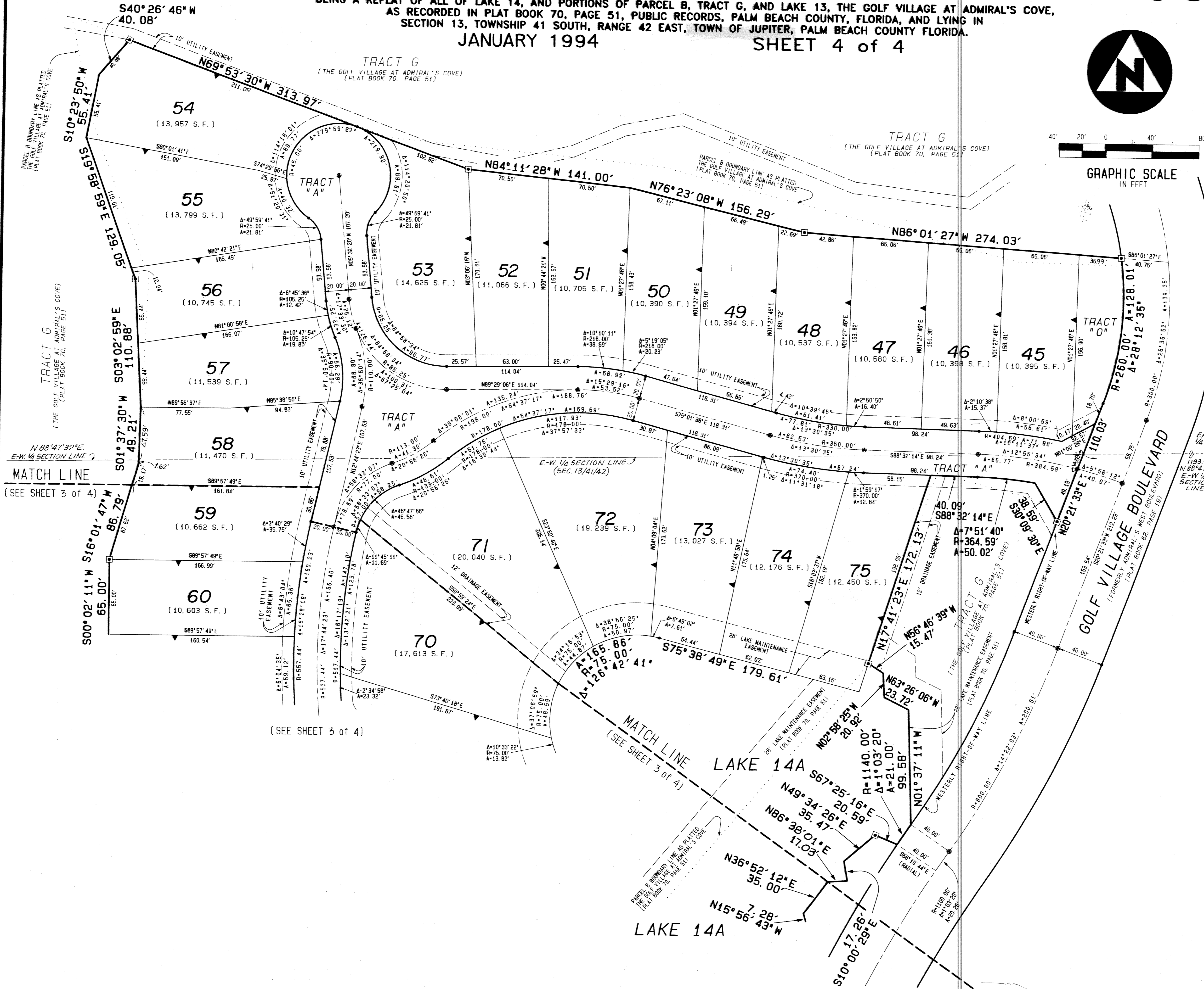


PARCEL B - GOLF VILLAGE AT ADMIRAL'S COVE

29

BEING A REPLAT OF ALL OF LAKE 14, AND PORTIONS OF PARCEL B, TRACT G, AND LAKE 13, THE GOLF VILLAGE AT ADMIRAL'S COVE, AS RECORDED IN PLAT BOOK 70, PAGE 51, PUBLIC RECORDS, PALM BEACH COUNTY, FLORIDA, AND LYING IN SECTION 13, TOWNSHIP 41 SOUTH, RANGE 42 EAST, TOWN OF JUPITER, PALM BEACH COUNTY FLORIDA.
 JANUARY 1994
 SHEET 4 of 4



- SURVEYOR'S NOTES AND LEGEND:
- BEARINGS SHOWN OR STATED HEREON, ARE BASED ON, OR ARE RELATIVE TO THE BEARING OF NORTH 20° 21' 33" EAST ALONG THE WESTERLY RIGHT-OF-WAY LINE OF GOLF VILLAGE BOULEVARD, AS SHOWN HEREON.
 - IN THOSE INSTANCES WHERE UTILITY/DRAINAGE STRUCTURES ARE CONSTRUCTED IN CONFLICT WITH THE PLATTED PERMANENT CONTROL POINTS (P.C.P.) POSITION, STRADDLERS MONUMENTED AS PERMANENT CONTROL POINTS WILL BE SET TO REFERENCE THE PLATTED P.C.P. POSITION.
 - WHERE DRAINAGE AND UTILITY EASEMENTS INTERSECT, THE AREAS WITHIN THE INTERSECTION ARE UTILITY AND DRAINAGE EASEMENTS, CONSTRUCTION AND MAINTENANCE OF UTILITY FACILITIES WITHIN THESE AREAS OF INTERSECTION SHALL NOT INTERFERE WITH THE DRAINAGE FACILITIES THEREIN.
 - NOTICE: THERE MAY BE ADDITIONAL RESTRICTIONS, NOT SHOWN ON THIS PLAT, THAT MAY BE FOUND IN THE PUBLIC RECORDS OF PALM BEACH COUNTY, FLORIDA.
 - LINES WHICH INTERSECT CURVES ARE NON-RADIAL, UNLESS OTHERWISE NOTED
 - P.C.P. DENOTES PERMANENT CONTROL POINT
 - L.M.E. DENOTES LAKE MAINTENANCE EASEMENT
 - S.F. DENOTES SQUARE FEET
 - PERMANENT REFERENCE MONUMENT 4" x 4" x 24" CONCRETE MONUMENT NO. 2424
 - PERMANENT CONTROL POINT CARRIAGE BOLT AND WASHER NO. 2424
 - DENOTES ZERO LOT LINE
 - L.C.B. DENOTES LONG CHORD BEARING

This instrument was prepared by Wm. R. Van Campen, R.L.S., in and for the offices of Bench Mark Land Surveying & Mapping, Inc., 4152 West Blue Heron Boulevard, Suite 121, Riviera Beach, FL 33404 Fax (407) 844-9859 Phone (407) 848-2102

BENCH MARK
 Land Surveying and Mapping, Inc.
 4152 West Blue Heron Blvd, Suite 121, Riviera Beach, FL 33404
 Fax (407) 844-9859 Phone (407) 848-2102

RECORD PLAT
PARCEL B - GOLF VILLAGE AT ADMIRAL'S COVE

DWN RHD/DAD	FB	DATE 6-22-93	WO.# P151
CKD	FILE P151/PLAT	SCALE 1"=40'	SHEET 4 OF 4

TAZ 39

SUBDIVISION Golf Village
 BOOK 72 PAGE 29 FLOOD MAP
 FLOOD ZONE - ZONING
 QUAD # -
 SE - ZIP CODE -
 PUD NAME Admirals Cove